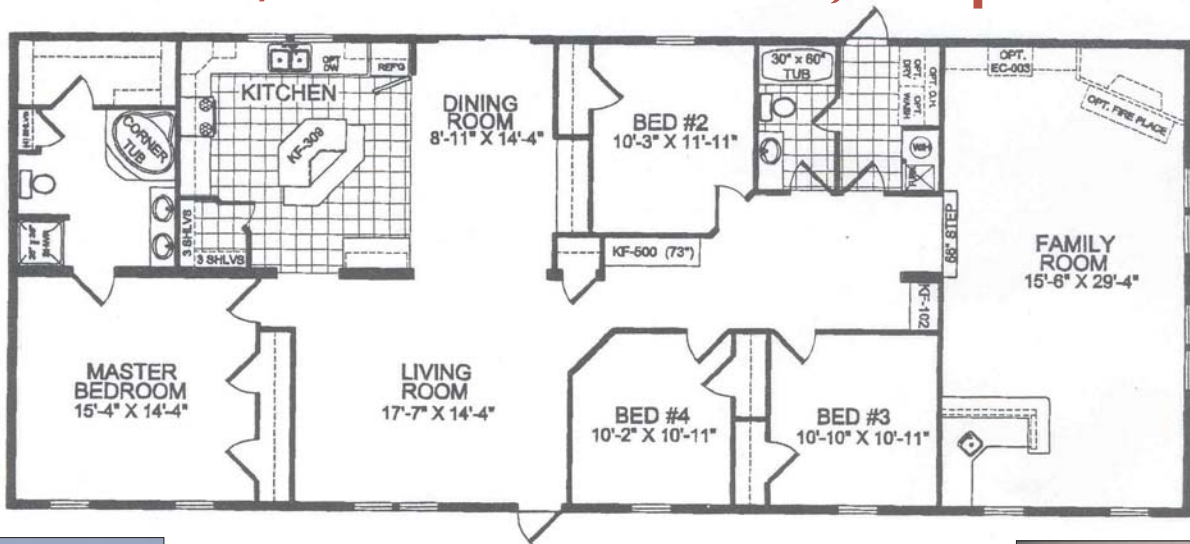




Brentwood "Big Foot" 988

4 Bedroom/2 Bath 32' x 76' 2,305 square feet



Home Features:

**options shown may be in addition to base price*

- * Step Down Family Room with Fireplace & Wet Bar
- * Glamour Master Bath
- * Island Kitchen with Pantry and plenty of Cabinetry
- * Built in Entertainment Center in Family Room & Kitchen
- * 5/12 Residential Roof Pitch



AGL Homes of Caledonia

4305 State Route 5 - Caledonia, NY 14423 - (585)226-2727

www.aglhomes.com

BRENTWOOD SERIES DOUBLEWIDE STANDARD SPECIFICATIONS

- ~ SHINGLED ROOF WITH CONTINUOUS RIDGE VENT
- ~ DOUBLE 4 1/2" VINYL SIDING
- ~ 7'6" SIDEWALL CONSTRUCTION
- ~ 30 LB. ROOF LOAD
- ~ BLACK BOARD SHEATHING BACKER
- ~ 12" VINYL SHUTTERS- FRONT DOOR SIDE
- ~ IN FLOOR HEAT DUCT CROSSOVERS
- ~ PAINTED SELF STORING STORM WINDOWS W/ SCREENS
- ~ 12" GABLE END OVERHANG 6" OVERHANG ON SIDES
- ~ 2X6 EXTERIOR WALL STUDS- 16" O.C. WITH R-19 INSULATION
- ~ R-26 ROOF INSULATION
- ~ R-22 FLOOR INSULATION
- ~ 2X4 DOUBLE MARRIAGE LINE
- ~ 2X6 FLOOR JOISTS 16" O.C.
- ~ VAULTED CEILINGS THRUOUT
- ~ 1/2" DRYWALL CEILING WITH STIPPLE TEXTURED FINISH
- ~ VINYL CLAD GYPSUM WALLBOARDS THRUOUT
- ~ MINI-BLINDS THRUOUT WITH DRAPES & VALANCES
- ~ FULL SIZE 60" TUBS
- ~ SHOWER CURTAIN WITH ROD @ ALL TUBS EXCEPT GLAMOUR BATH TUBS
- ~ POWERED VENT FANS IN ALL BATHS
- ~ STAINLESS STEEL KITCHEN SINKS
- ~ 16 CU. FT. 2 DR. FROST-FREE REFRIGERATOR
- ~ 30" GAS RANGE WITH POWER LIGHTED RANGE HOOD
- ~ GFI PROTECTED OUTLETS
- ~ LINED OVERHEAD CABINETS
- ~ CENTER SHELVES IN BASE & OVERHEADS
- ~ LOW MAINTENANCE VINYL FLOORING
- ~ SIDE MOUNT ROLLER GUIDES
- ~ MDF PLAQUE CABINET DOORS W/ BRASS KNOBS
- ~ BRASS CABINET PULLS
- ~ PORCELAIN COMMODES WITH SHUTOFFS
- ~ METAL DOOR KNOBS
- ~ WIRE VENTED SHELF- ALL CLOSETS
- ~ COVERED EXT. GFI RECEPTACLE
- ~ 30 GALLON ELECTRIC WATER HEATER
- ~ MILLER AG GAS FURNACE SIZED TO HOME
- ~ FLOOR MOUNTED DOOR STOPS
- ~ VENTILLAIRE AIR EXCHANGE SYSTEM
- ~ 100 AMP ELECTRIC SERVICE
- ~ EXT. LIGHT AT ALL EXT. DOORS
- ~ HOUSE TYPE FRONT DOOR WITH STORM & SCREEN
- ~ COTTAGE REAR DOOR
- ~ DAYBREAK SCULPTURED CARPET THRUOUT EXCEPT WET AREAS
- ~ 1/2" REBOND CARPET PAD
- ~ CEILING LIGHTS IN ALL BEDROOMS
- ~ LIGHTS OVER BATH VANITIES
- ~ SMOKE DETECTORS PER CODE
- ~ ALL COPPER WIRING

BIG FOOT PACKAGE STANDARD SPECIFICATIONS

- STEP DOWN FAMILY ROOM
- 5/12 RESIDENTIAL ROOF PITCH
- 8 FOOT CEILINGS
- KITCHEN PANTRY
- BUILT IN COMPUTER DESK
- WET BAR WITH SINK IN FAMILY ROOM
- WOOD FRONT FIREPLACE
- STAGGERED OVERHEAR KITCHEN CABINETS
- STEEL FRONT & REAR DOORS
- LOW E THERMAL PAYNE WINDOWS
- DESIGNERS CHOICE SERIES CARPETS
- 30 MIL LEGACY ENTRY LINOLEUM
- 1 PADDLE FAN IN DESIRED LOCATION
- WALL PAPER BORDER
- PICTURE FRAME OAK CABINET DOORS
- SHELF OVER WASHER/DRYER
- APPLIANCE PACKAGE
- 18 CUBIC FOOT REFRIGERATOR
- INSTALLED DISHWASHER
- PERIMETER HEAT
- OIL/GAS GUN FURNACE 86
- FURNACE STACK EXTENSION
- 40 GALLON ELECTRIC WATER HEATER
- ONE PIECE 60" FIBERGLASS TUBS
- ONE PIECE 36" FIBERGLASS SHOWER
- DELUXE SHOWER DOOR
- TUB OVERDRAPE IN MAIN BATH
- TOWEL BAR AND TISSUE HOLDERS IN BATHS
- PLUMB AND WIRE FOR WASHER/DRYER
- WATER SHUT OFFS THOUGH OUT



www.aglhomes.com

AGL Homes of Caledonia
4305 State Route 5
Caledonia, NY 14423
(585) 226-2727