



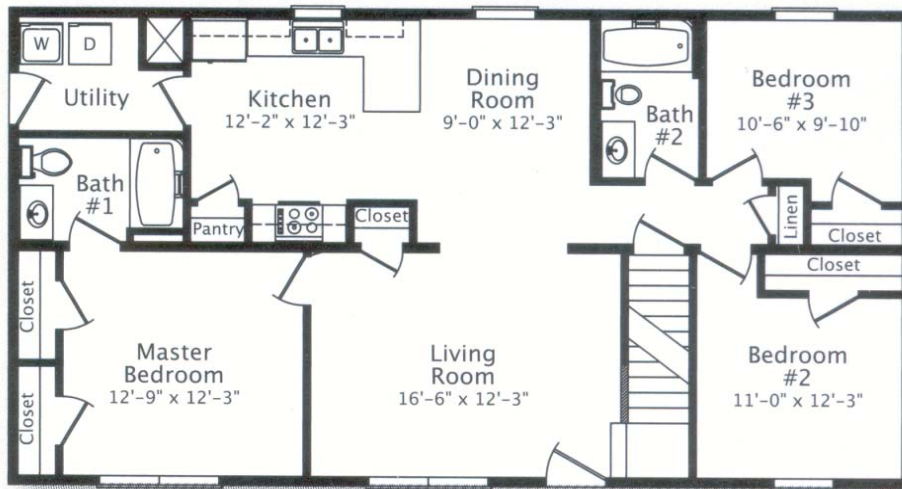
Boxwood

Modular Cape Cod

SPECIAL BUY MODEL

3 Bedroom-2 Bath
26' x 50' - 1,248 sq.ft.

Unfinished second floor appr. 600 sq.ft.



Model Home Features:

- * Private Master Suite
- * Separate Master Closets
- * Utility/Laundry Room
- * Side Entry - Garage Access
- * Third Bedroom or Den
- * Appliance Package
- * Unfinished 2nd Floor



Models Open 7 Days A Week!

3180 State Route 96

Clifton Springs, NY 14432

315-462-9401

www.aglhomes.com

Due to continuous product development and improvement, prices, specifications, and materials are subject to change without notice or obligation. Square footage and other dimensions are approximate. Images such as renderings, photos, and floor plans may be shown with optional features and/or third-party additions that may not be available in all regions or situations.