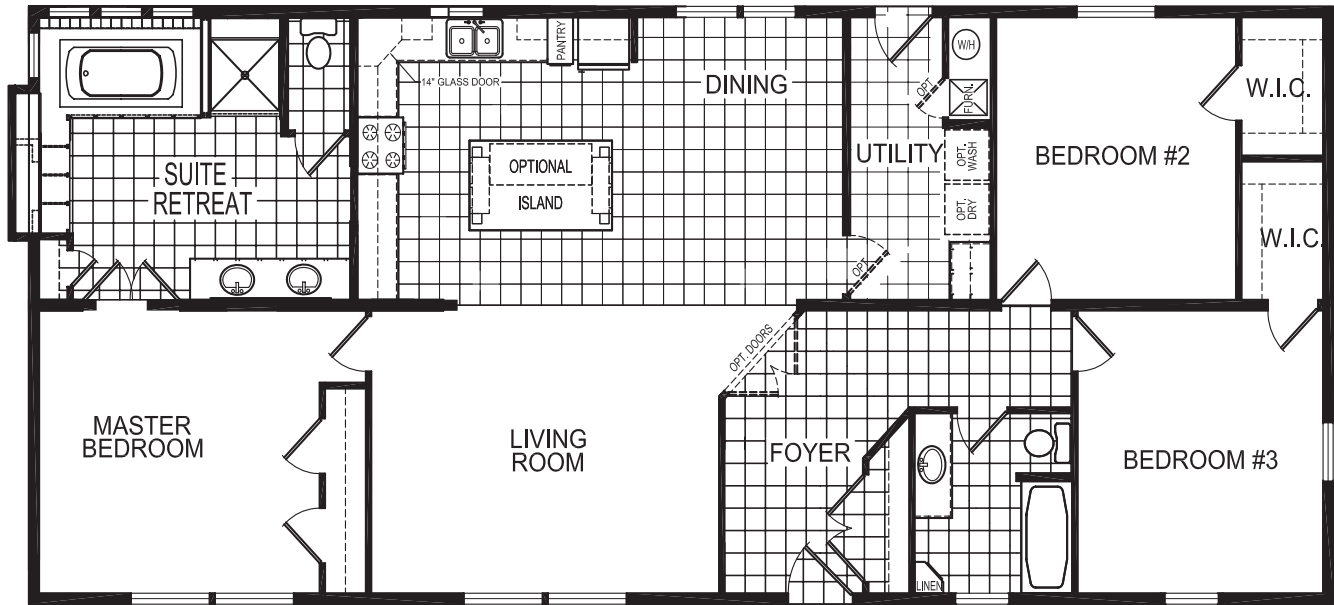


# Redman A501



**Redman  
Homes, Inc.**

**3 Bedroom/2 Bath  
28' x 64' - 1,706 sq.ft.**



## This Model Home Features:

- \* Spacious Island Kitchen
- \* Suite Retreat Master Bath
- \* Large Living Room
- \* GE Appliance Package
- \* Entry Foyer w/French Doors
- \* Laundry/Utility Room



**AGL Homes**  
**3180 State Route 96**  
**Clifton Springs, NY 14432**  
**315-462-9401**  
[www.aglhomes.com](http://www.aglhomes.com)

Due to continuous product development and improvement, prices, specifications, and materials are subject to change without notice or obligation. Square footage and other dimensions are approximate. Images such as renderings, photos, and floor plans may be shown with optional features and/or third-party additions that may not be available in all regions or situations.